



GRID IN ORTH  
NAD 83 (2011 ADJUSTMENT)

NOTE:  
FOR 'ADDITIONAL NOTES' SEE SHEET 1.

**COUNTY LINE MONUMENT SUMMARY TABLE NAD 83 (2011 Adj.)**

Monument	Northing (ft.)	Easting (ft.)	Description
'A-1'	262764.20	1914237.07	#8 RBR. W/ALUM. DISK
'A-2'	263588.05	1915037.83	#8 RBR. W/ALUM. DISK
'A-3'	266926.33	1918282.62	#8 RBR. W/ALUM. DISK
'A-4'	270407.74	1921666.53	#8 RBR. W/ALUM. DISK
'A-5'	272351.76	1923556.11	#8 RBR. W/ALUM. DISK
'A-6'	277061.11	1928133.57	#8 RBR. W/ALUM. DISK
'A-7'	279106.84	1930122.01	#8 RBR. W/ALUM. DISK
'B'	280419.73	1931398.13	#8 RBR. W/ALUM. DISK
'C'	282898.50	1936177.38	#8 RBR. W/ALUM. DISK
'C-1'	287453.41	1941540.59	#8 RBR. W/ALUM. DISK
'C-2'	292373.12	1947333.35	#8 RBR. W/ALUM. DISK
'C-2a'	292963.41	1948028.39	CONCRETE MONUMENT
'C-3'	295898.74	1951484.62	#8 RBR. W/ALUM. DISK
'C-4'	300148.48	1956488.52	#8 RBR. W/ALUM. DISK
'C-5'	304484.98	1961594.57	#8 RBR. W/ALUM. DISK
'C-6'	307950.50	1965675.07	#8 RBR. W/ALUM. DISK
'C-7'	313023.75	1971648.61	#8 RBR. W/ALUM. DISK
'D'	316889.68	1976200.58	#8 RBR. W/ALUM. DISK
'D-1'	318929.22	1978529.81	#8 RBR. W/ALUM. DISK
'D-2'	320649.81	1980494.79	#8 RBR. W/ALUM. DISK
'D-3'	324216.03	1984567.55	1" OPEN TOP
'E'	324910.87	1985361.07	#8 RBR. W/ALUM. DISK
'E-1'	328223.17	1988887.56	#8 RBR. W/ALUM. DISK
'E-2'	331917.16	1992820.41	#8 RBR. W/ALUM. DISK
'E-3'	332951.88	1993922.03	#8 RBR. W/ALUM. DISK

**LINE TABLE**

LINE	BEARING	DISTANCE
L1	N44° 11' 11"E	±277

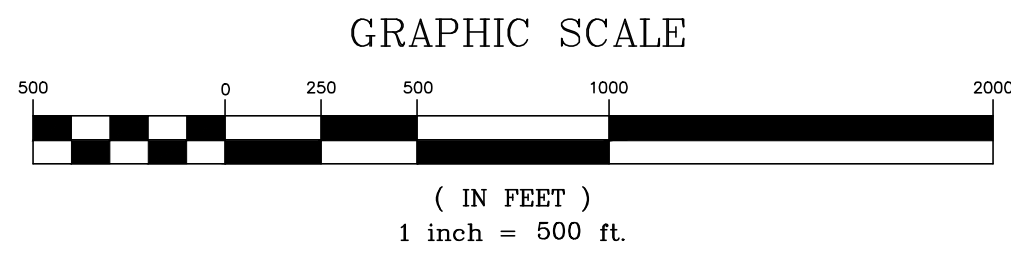
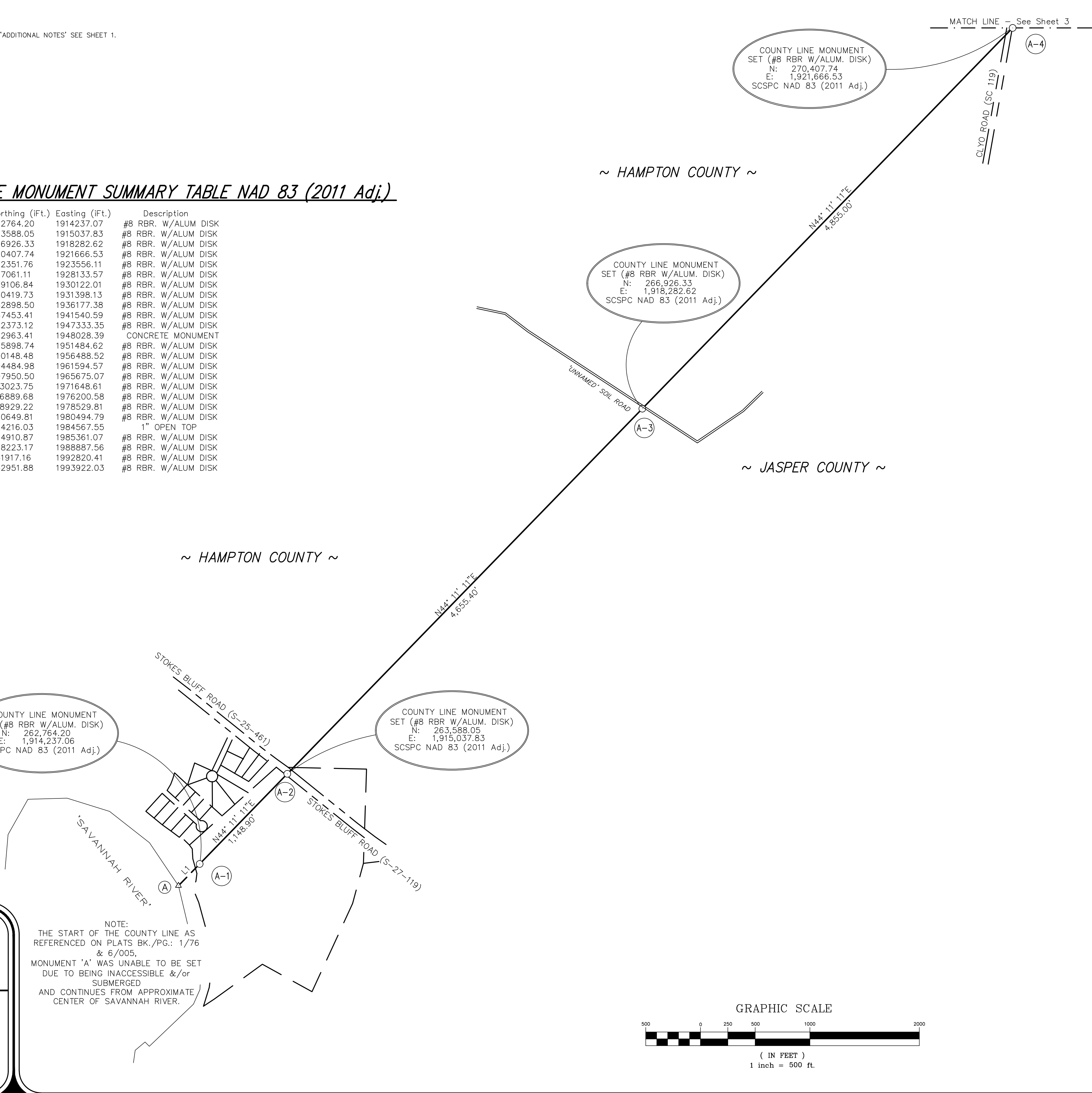
I HEREBY STATE THAT TO THE BEST OF MY PROFESSIONAL KNOWLEDGE, INFORMATION, AND BELIEF, THE SURVEY SHOWN HEREON WAS MADE IN ACCORDANCE WITH THE REQUIREMENTS OF THE 'STANDARDS OF PRACTICE MANUAL FOR SURVEYING IN SOUTH CAROLINA' (EFFECTIVE JUNE 26, 2009), AS PER ARTICLE 4, REGULATION 49-420 F., THAT THIS MAP OR PLAT IS INTENDED ONLY TO SHOW INFORMATION SURVEYED FOR A SPECIFIC STATED PURPOSE; THAT SURVEY LINES SHOWN HEREON ARE BASED ON ACTUAL FIELD SURVEY EVIDENCE AND/OR MEASUREMENTS WHICH MEET OR EXCEED THE REQUIREMENTS FOR A CLASS 'A' SURVEY AS SPECIFIED THEREIN.

DAVID BRANCH  
PROFESSIONAL ENGINEER  
No. 11053

NOT VALID UNLESS  
SIGNED IN RED INK

THIS DOCUMENT ORIGINALLY ISSUED AND SEALED BY  
DAVID BRANCH, P.E., No. 11053 ON 3/18/2024  
THIS MEASUREMENT SHOULD NOT BE CONSIDERED A CERTIFIED MEASUREMENT.

NOTE:  
THE START OF THE COUNTY LINE AS REFERENCED ON PLATS BK./PG.: 1/76 & 6/005,  
MONUMENT 'A' WAS UNABLE TO BE SET DUE TO BEING INACCESSIBLE &/or SUBMERGED  
AND CONTINUES FROM APPROXIMATE CENTER OF SAVANNAH RIVER.



This is not a valid, true copy of this document unless bearing an embossed seal of the surveyor or engineer.  
Copyright 2024, CORNERSTONE SURVEYING & ENGINEERING, INC. All rights reserved. Reproduction or use of this document, in whole or in part, without permission is prohibited.  
Print No. \_\_\_\_\_  
Date: \_\_\_\_/\_\_\_\_/\_\_\_\_

**CORNERSTONE**  
SURVEYING & ENGINEERING, INC.  
1240 Bocons Bridge Rd. • Summerville • South Carolina • 29485 • Phone: 843-871-9706

A PLAT OF A PORTION OF THE  
**HAMPTON—JASPER COUNTY LINE**  
STARTING AT A POINT IN THE  
'SAVANNAH RIVER' ON THE GEORGIA—SOUTH CAROLINA STATE LINE  
THEN RUNNING NORTHEASTERLY THROUGH 'COTTON HILL ROAD' (U.S. HWY. 321)  
TO A POINT NEAR THE INTERSECTION OF 'SEVERAL UNNAMED SOIL ROADS';  
TURNING SLIGHTLY EAST-NORTHEAST TO A POINT NEAR 'PLEASANT HILL ROAD' (S-25-882/S-27-50);  
THEN NORTHEASTERLY TO A POINT NEAR 'BROWNING GATE ROAD'/'HERITAGE ROAD' (S.C. HWY. 3);  
CONTINUING NORTHEASTERLY TO A POINT AT 'OLD TRAM ROAD' (LOCAL/S-27-211, RESPECTIVELY);  
THEN RUNNING NORTHEASTERLY TO A POINT IN THE 'COOSAWHATCHE RIVER' WHERE THE COUNTY  
LINE TURNS AND FOLLOWS THE 'COOSAWHATCHE RIVER' SOUTH-SOUTHEAST TO THE 'TULLIFINNY RIVER';  
HAMPTON COUNTY & JASPER COUNTY BEING LOCATED IN  
THE SOUTHERN CORNER OF THE STATE OF SOUTH CAROLINA.

Date of Map:  
4/27/2023

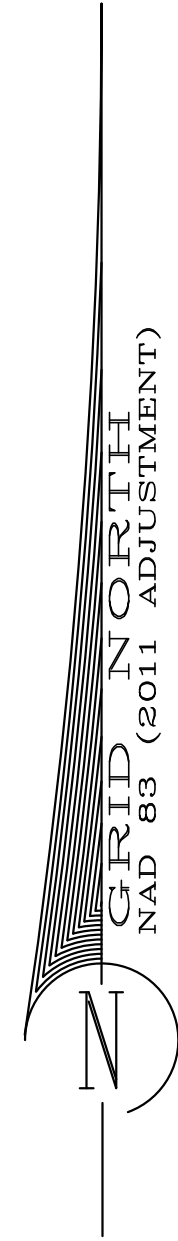
□ Drawn: AWK  
□ Design: AWK  
□ Checked: RDB  
□ Approved: RDB

CAD File: 2020 HAMPTON-JASPER.dwg  
F.B. & Pg. N/A  
P.B. & Pg. N/A  
Pl. Board Appl. # N/A

Date	Revision No.

Proj. No.: 20020  
Sheet 2 Of 10

NOTE:  
FOR 'ADDITIONAL NOTES' SEE SHEET 1.

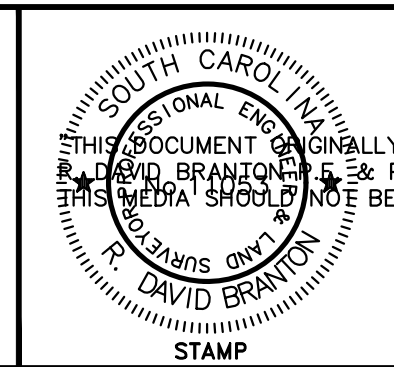
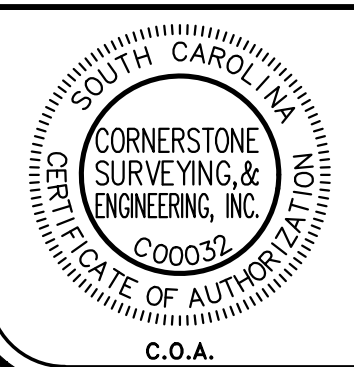


~ HAMPTON COUNTY ~

~ JASPER COUNTY ~

I HEREBY STATE THAT TO THE BEST OF MY PROFESSIONAL KNOWLEDGE, INFORMATION, AND BELIEF, THE SURVEY SHOWN HEREON WAS MADE IN ACCORDANCE WITH THE REQUIREMENTS OF THE 'STANDARDS OF PRACTICE MANUAL FOR SURVEYING IN SOUTH CAROLINA' (EFFECTIVE JUNE 26, 2009), AS PER ARTICLE 4, REGULATION 49-420 F., THAT THIS MAP OR PLAT IS INTENDED ONLY TO SHOW INFORMATION SURVEYED FOR A SPECIFIC STATED PURPOSE; THAT SURVEY LINES SHOWN HEREON ARE BASED ON ACTUAL FIELD SURVEY EVIDENCE, AND/OR MEASUREMENTS WHICH MEET OR EXCEED THE REQUIREMENTS FOR A CLASS 'A' SURVEY AS SPECIFIED THEREIN.

NOT VALID UNLESS  
SIGNED IN RED INK



ISSUED AND SEALED BY  
DAVID BRANCH, P.E. & FLS. No. 11053 ON 3/18/2024  
THIS MEDIA SHOULD BE CONSIDERED A CERTIFIED COPY

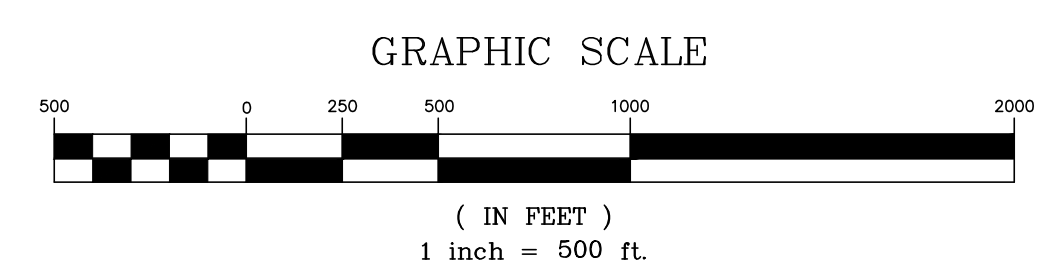
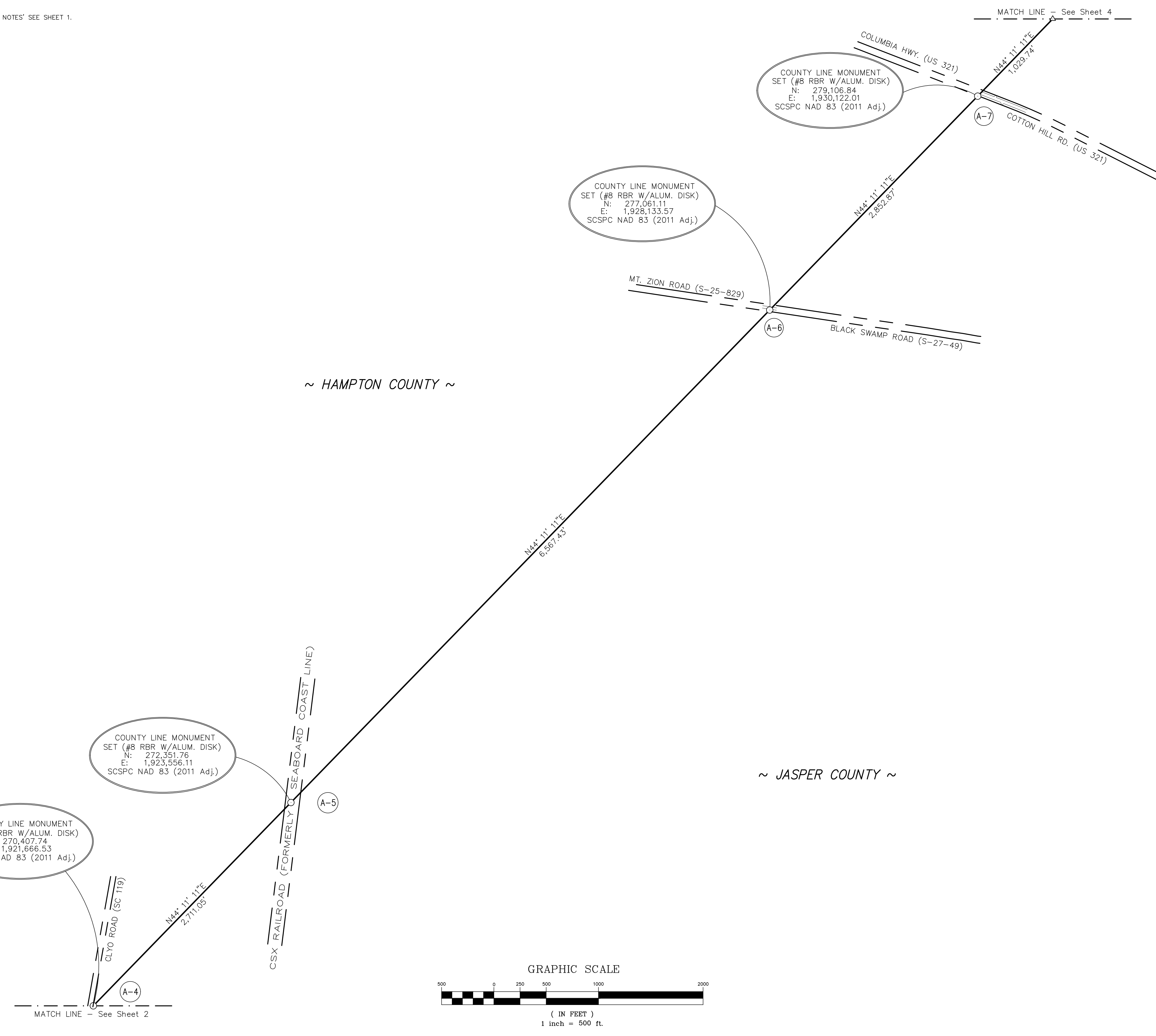
EMBOSSED SEAL

COUNTY LINE MONUMENT  
SET (#8 RBR W/ALUM. DISK)  
N: 270,407.74  
E: 1,921,666.53  
SCSPC NAD 83 (2011 Adj.)

COUNTY LINE MONUMENT  
SET (#8 RBR W/ALUM. DISK)  
N: 272,351.76  
E: 1,923,556.11  
SCSPC NAD 83 (2011 Adj.)

COUNTY LINE MONUMENT  
SET (#8 RBR W/ALUM. DISK)  
N: 277,061.11  
E: 1,928,133.57  
SCSPC NAD 83 (2011 Adj.)

COUNTY LINE MONUMENT  
SET (#8 RBR W/ALUM. DISK)  
N: 279,106.84  
E: 1,930,122.01  
SCSPC NAD 83 (2011 Adj.)



This is not a valid, true copy of this document unless bearing on the embossed seal of the surveyor or engineer.  
Copyright 2024, CORNERSTONE SURVEYING & ENGINEERING, INC. All rights reserved. Reproduction or use of this document, in whole or in part, without permission is prohibited.  
Print No. \_\_\_\_\_  
Date: \_\_\_\_/\_\_\_\_/\_\_\_\_

**CORNERSTONE**  
SURVEYING & ENGINEERING, INC.  
1240 Bocons Bridge Rd. • Summerville • South Carolina • 29485 • Phone: 843-871-9706

A PLAT OF A PORTION OF THE  
**HAMPTON-JASPER COUNTY LINE**  
STARTING AT A POINT IN THE  
'SAVANNAH RIVER' ON THE GEORGIA-SOUTH CAROLINA STATE LINE,  
THEN RUNNING NORTHEASTERLY THROUGH 'COTTON HILL ROAD' (U.S. HWY. 321)  
TO A POINT NEAR THE INTERSECTION OF SEVERAL UNNAMED SOIL ROADS,  
TURNING SLIGHTLY EAST-NORTHEAST TO A POINT NEAR PLEASANT HILL ROAD (S-25-682/S-27-50),  
CONTINUING NORTHEASTERLY TO A POINT AT 'OLD TRAM ROAD' (LOCAL S-27-21), RESPECTIVELY,  
THEN RUNNING NORTHEASTERLY TO A POINT IN THE COOSAWATCHIE RIVER, WHERE THE COUNTY LINE TURNS AND FOLLOWS THE COOSAWATCHIE RIVER SOUTH-SOUTHEAST TO THE TULFINNY RIVER.  
THE SOUTHERN CORNER OF THE STATE OF SOUTH CAROLINA

Date of Map:  
4/27/2023

- Drawn: AWK
- Design: AWK
- Checked: RDB
- Approved: RDB

CAD File: 2020 HAMPTON-JASPER.dwg  
F.B. & Pg. N/A  
P.B. & Pg. N/A  
Pl. Board Appl. # N/A

Date	Revision No.

GRID IN ORTH  
NAD 83 (2011 ADJUSTMENT)

NOTE:  
FOR 'ADDITIONAL NOTES' SEE SHEET 1.

MATCH LINE - See Sheet 5

OLD CEMETERY  
TMS #016-00-02-044 (JASPER)

COUNTY LINE MONUMENT  
SET (#8 RBR W/ALUM. DISK)  
N: 287,453.41  
E: 1,941,340.59  
SCSPC NAD 83 (2011 Adj.)

COUNTY LINE MONUMENT  
SET (#8 RBR W/ALUM. DISK)  
N: 282,898.50  
E: 1,936,177.38  
SCSPC NAD 83 (2011 Adj.)

COUNTY LINE MONUMENT  
SET (#8 RBR W/ALUM. DISK)  
FOUND (DESTROYED CONCRETE MONUMENT)  
N: 280,419.73  
E: 1,931,398.13  
SCSPC NAD 83 (2011 Adj.)

MATCH LINE - See Sheet 3

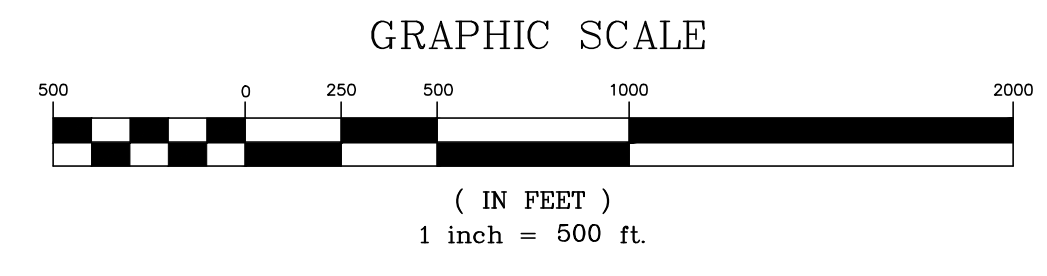
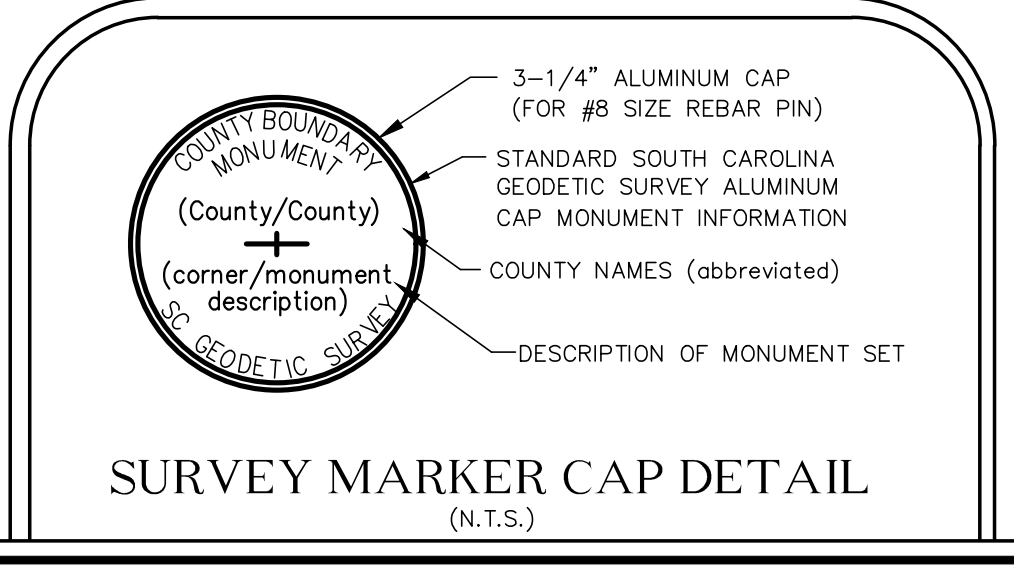
~ HAMPTON COUNTY ~

~ HAMPTON COUNTY ~

~ JASPER COUNTY ~

I HEREBY STATE THAT TO THE BEST OF MY PROFESSIONAL KNOWLEDGE, INFORMATION, AND BELIEF, THE SURVEY SHOWN HEREON WAS MADE IN ACCORDANCE WITH THE REQUIREMENTS OF THE 'STANDARDS OF PRACTICE MANUAL FOR SURVEYING IN SOUTH CAROLINA' (EFFECTIVE JUNE 26, 2009), AS PER ARTICLE 4, REGULATION 49-420 F., THAT THIS MAP OR PLAT IS INTENDED ONLY TO SHOW INFORMATION SURVEYED FOR A SPECIFIC STATED PURPOSE; THAT SURVEY LINES SHOWN HEREON ARE BASED ON ACTUAL FIELD SURVEY EVIDENCE AND/OR MEASUREMENTS WHICH MEET OR EXCEED THE REQUIREMENTS FOR A CLASS 'A' SURVEY AS SPECIFIED THEREIN.

	NOT VALID UNLESS SIGNED IN RED INK
	THIS DOCUMENT ORIGINALLY ISSUED AND SEALED BY REDAV BRANCH P.E. No. 11053 ON 3/18/2024 THIS MEDIA SHOULD NOT BE CONSIDERED A CERTIFIED REPRODUCTION
	STAMP



This is not a valid, true copy of this document unless bearing an embossed seal of the surveyor or engineer.  
Copyright 2024, CORNERSTONE SURVEYING & ENGINEERING, INC. All rights reserved. Reproduction or use of this document, in whole or in part, without permission is prohibited.  
Print No. / /  
Date: / /

**CORNERSTONE**  
SURVEYING & ENGINEERING, INC.  
1240 Boccons Bridge Rd. • Summerville • South Carolina • 29485 • Phone: 843-871-9706

A PLAT OF A PORTION OF THE  
**HAMPTON-JASPER COUNTY LINE**  
STARTING AT A POINT IN THE  
'SAVANNAH RIVER' ON THE GEORGIA-SOUTH CAROLINA STATE LINE,  
THEN RUNNING NORTHEASTERLY THROUGH 'COTTON HILL ROAD' (U.S. HWY. 321)  
TO A POINT NEAR THE INTERSECTION OF SEVERAL UNNAMED SOIL ROADS,  
TURNING SLIGHTLY EAST-NORTHEAST TO A POINT NEAR PLEASANT HILL ROAD (S-25-822/S-27-50),  
THEN NORTHEASTERLY TO A POINT NEAR BROWNING GATE ROAD/HERITAGE ROAD (S.C. HWY. 3),  
CONTINUING NORTHEASTERLY TO A POINT AT 'OLD TRAM ROAD' (LOCAL S-27-271), RESPECTIVELY,  
THEN RUNNING NORTHEASTERLY TO A POINT IN THE COOSAWATCHIE RIVER WHERE THE COUNTY  
LINE TURNS AND FOLLOWS THE COOSAWATCHIE RIVER SOUTH-SOUTHEAST TO THE TULLIFINNY RIVER.  
THE SOUTHERN CORNER OF THE STATE OF SOUTH CAROLINA

Date of Map:  
4/27/2023

Drawn: AWK  
 Design: AWK  
 Checked: RDB  
 Approved: RDB

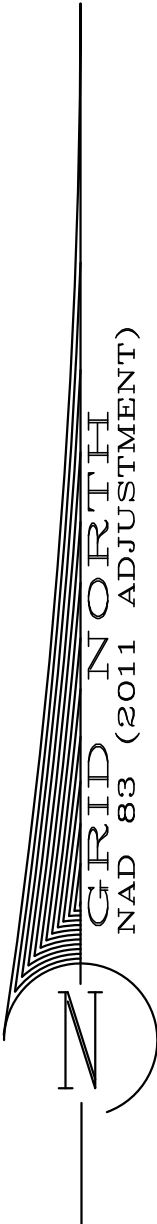
CAD File: 2020 HAMPTON-JASPER.dwg  
F.B. & Pg. N/A  
P.B. & Pg. N/A  
Pl. Board Appl. # N/A

Date	Revision No.

Proj. No.: 20020  
Sheet 4 of 10



NOTE:  
FOR 'ADDITIONAL NOTES' SEE SHEET 1.



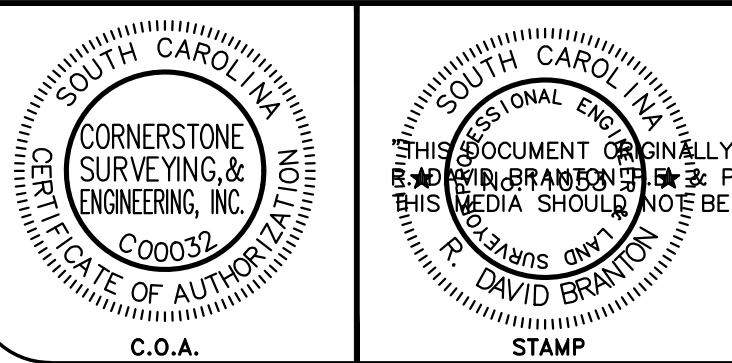
COUNTY LINE MONUMENT  
SET (#8 RBR W/ALUM. DISK)  
N: 292,373.12  
E: 1,947,333.35  
SCSPC NAD 83 (2011 Adj.)

COUNTY LINE MONUMENT  
FOUND (3"X3" CONCRETE MONUMENT)  
SUBMERGED UNDER WATER  
N: 292,963.41  
E: 1,948,028.39  
SCSPC NAD 83 (2011 Adj.)

COUNTY LINE MONUMENT  
SET (#8 RBR W/ALUM. DISK)  
N: 295,898.74  
E: 1,951,484.62  
SCSPC NAD 83 (2011 Adj.)

COUNTY LINE MONUMENT  
SET (#8 RBR W/ALUM. DISK)  
N: 287,453.41  
E: 1,941,540.59  
SCSPC NAD 83 (2011 Adj.)

I HEREBY STATE THAT TO THE BEST OF MY PROFESSIONAL KNOWLEDGE, INFORMATION, AND BELIEF, THE SURVEY SHOWN HEREON WAS MADE IN ACCORDANCE WITH THE REQUIREMENTS OF THE 'STANDARDS OF PRACTICE MANUAL FOR SURVEYING IN SOUTH CAROLINA' (EFFECTIVE JUNE 26, 2009), AS PER ARTICLE 4, REGULATION 49-420 F., THAT THIS MAP OR PLAT IS INTENDED ONLY TO SHOW INFORMATION SURVEYED FOR A SPECIFIC STATED PURPOSE; THAT SURVEY LINES SHOWN HEREON ARE BASED ON ACTUAL FIELD SURVEY EVIDENCE AND/OR MEASUREMENTS WHICH MEET OR EXCEED THE REQUIREMENTS FOR A CLASS 'A' SURVEY AS SPECIFIED THEREIN.



NOT VALID UNLESS  
SIGNED IN RED INK

ISSUED AND SEALED BY  
P.L.S. No. 11053 ON 3/18/2024  
CONSIDERED A CERTIFIED  
MEDIA SHOULD NOT BE

DAVID BRANCH

EMBOSSED SEAL

~ HAMPTON COUNTY ~

~ JASPER COUNTY ~

CYPRESS BRANCH ROAD  
(U.S. 910)

TMS #017-00-02-001

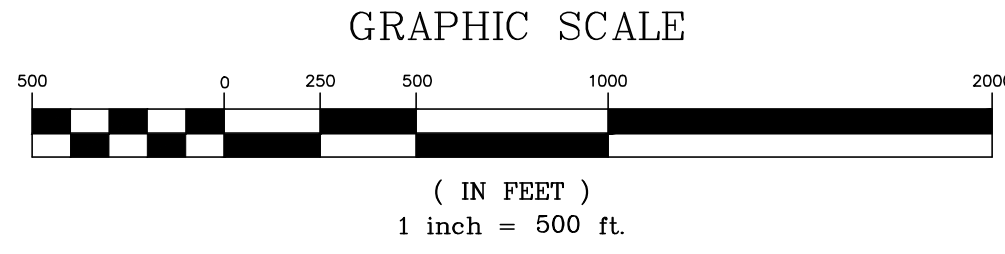
N49° 59' 37"E  
7,599.98

N49° 59' 37"E  
911.88

N49° 59' 37"E  
4,534.50

MATCH LINE - See Sheet 4

MATCH LINE - See Sheet 6



This is not a valid, true copy of the document unless bearing an embossed seal of the surveyor or engineer.

Copyright © 2024, CORNERSTONE SURVEYING & ENGINEERING, INC. All rights reserved. Reproduction or use of this document, in whole or in part, without permission is prohibited.

Print No. \_\_\_\_\_  
Date: \_\_\_\_/\_\_\_\_/\_\_\_\_

**CORNERSTONE**  
SURVEYING & ENGINEERING, INC.  
1240 Boccons Bridge Rd. • Summerville • South Carolina • Phone: 843-871-9706

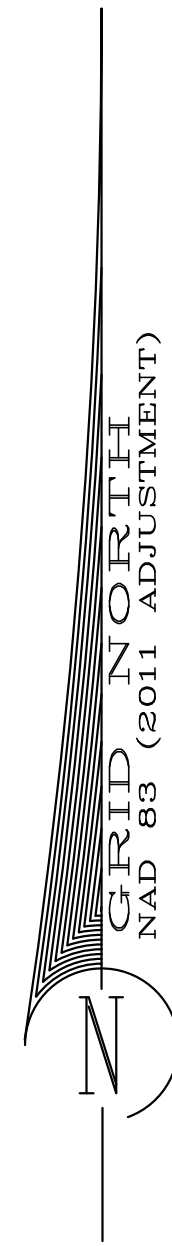
A PLAT OF A PORTION OF THE  
HAMPTON-JASPER COUNTY LINE  
STARTING AT A POINT IN THE  
'SAVANNAH RIVER' ON THE GEORGIA-SOUTH CAROLINA STATE LINE  
THEN RUNNING NORTHEASTERLY THROUGH 'COTTON HILL ROAD' (U.S. HWY. 321)  
TO A POINT NEAR THE INTERSECTION OF SEVERAL UNNAMED SOIL ROADS,  
TURNING SLIGHTLY EAST-NORTHEAST TO A POINT NEAR 'PLEASANT HILL ROAD' (S-25-862/S-27-50),  
THEN NORTHEASTERLY TO A POINT NEAR 'BROWNING GATE ROAD'/'HERITAGE ROAD' (S.C. HWY. 3),  
THEN RUNNING NORTHEASTERLY TO A POINT AT 'OLD TRAM ROAD'/'LOCAL/S-27-21', RESPECTIVELY,  
THEN RUNNING NORTHEASTERLY TO A POINT IN THE 'COOSAWATCHIE RIVER' WHERE THE COUNTY  
LINE TURNS AND FOLLOWS THE 'COOSAWATCHIE RIVER' SOUTH-SOUTHEAST TO THE 'TULIFINNY RIVER'.  
HAMPTON COUNTY & JASPER COUNTY BEING LOCATED IN  
THE SOUTHERN CORNER OF THE STATE OF SOUTH CAROLINA

Date of Map:  
4/27/2023  
 Drawn: AWK  
 Design: AWK  
 Checked: RDB  
 Approved: RDB  
 CAD File: 20020 HAMPTON-JASPER.dwg  
 F.B. & Pg. N/A  
 P.B. & Pg. N/A  
 Pl.Board Appl.# N/A

Date	Revision No.

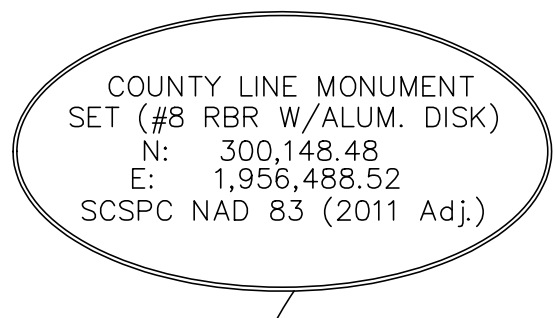
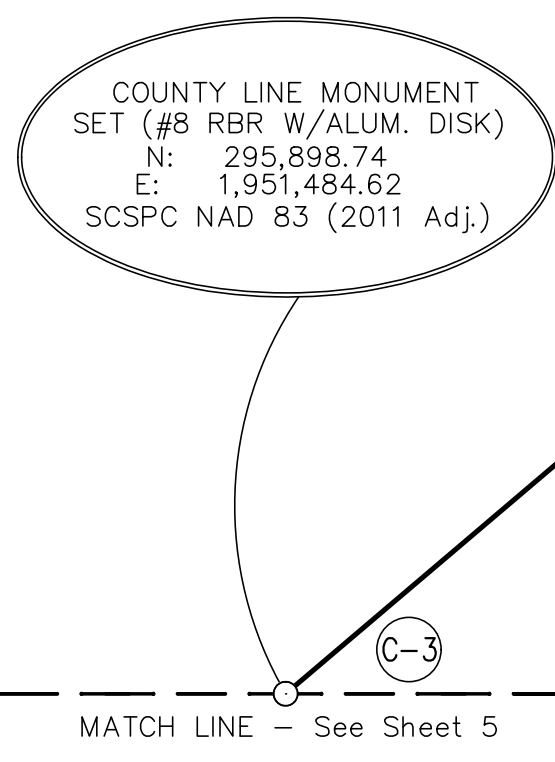
Proj. No.: 20020  
Sheet 5 Of 10

NOTE:  
FOR 'ADDITIONAL NOTES' SEE SHEET 1.



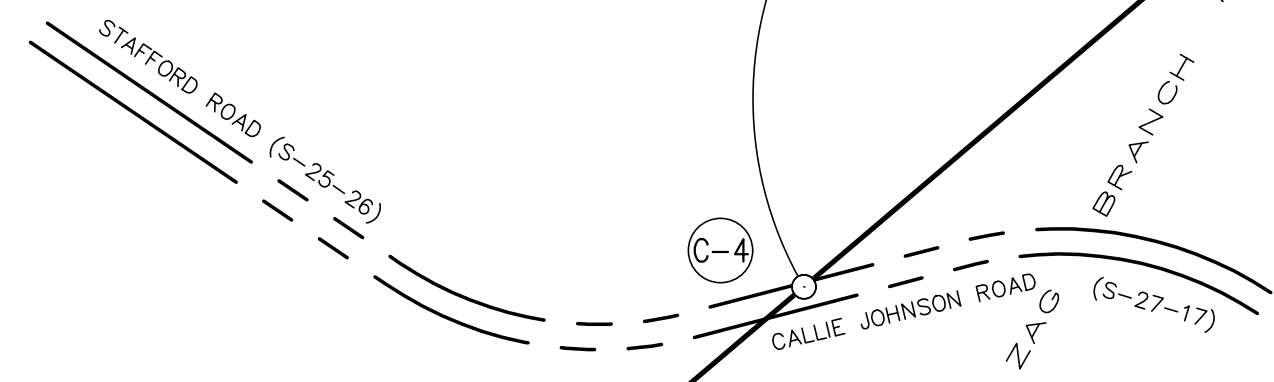
~ HAMPTON COUNTY ~

~ JASPER COUNTY ~



MATCH LINE - See Sheet 5

MATCH LINE - See Sheet 7

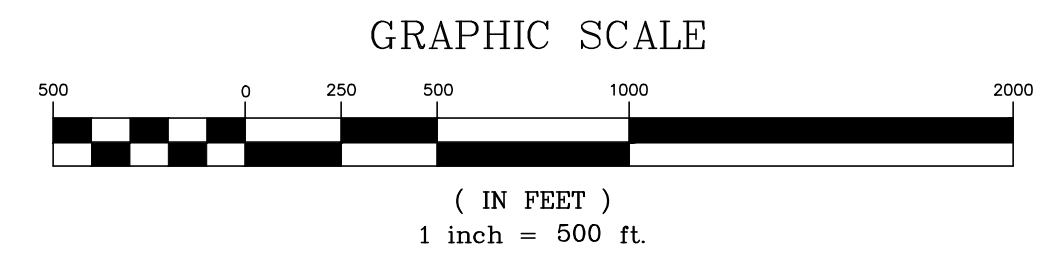


N49° 39' 33"E  
6,565.01'

N49° 39' 33"E  
5,893.10'

I HEREBY STATE THAT TO THE BEST OF MY PROFESSIONAL KNOWLEDGE, INFORMATION, AND BELIEF, THE SURVEY SHOWN HEREON WAS MADE IN ACCORDANCE WITH THE REQUIREMENTS OF THE 'STANDARDS OF PRACTICE MANUAL FOR SURVEYING IN SOUTH CAROLINA' (EFFECTIVE JUNE 26, 2009), AS PER ARTICLE 4, REGULATION 49-420 F., THAT THIS MAP OR PLAT IS INTENDED ONLY TO SHOW INFORMATION SURVEYED FOR A SPECIFIC STATED PURPOSE; THAT SURVEY LINES SHOWN HEREON ARE BASED ON ACTUAL FIELD SURVEY EVIDENCE AND/OR MEASUREMENTS WHICH MEET OR EXCEED THE REQUIREMENTS FOR A CLASS 'A' SURVEY AS SPECIFIED THEREIN.

		<p>NOT VALID UNLESS SIGNED IN RED INK</p> <p>ISSUED AND SEALED BY DAVID BRANCH, P.E. P.L. No. 11053 ON 3/18/2024 CONSIDERED A CERTIFIED EMBOSSSED SEAL</p>
--	--	--------------------------------------------------------------------------------------------------------------------------------------------------------------------------------



This is not a valid, true copy of this document unless bearing on embossed seal of the surveyor or engineer.  
Copyright 2024, CORNERSTONE SURVEYING & ENGINEERING, INC. All rights reserved. Reproduction or use of this document, in whole or in part, without written permission is prohibited.  
Print No. \_\_\_\_\_  
Date: \_\_\_\_/\_\_\_\_/\_\_\_\_

**CORNERSTONE**  
SURVEYING & ENGINEERING, INC.  
1240 Boccons Bridge Rd. • Summerville • South Carolina • 29485 • Phone: 843-871-9706

A PLAT OF A PORTION OF THE  
**HAMPTON - JASPER COUNTY LINE**  
STARTING AT A POINT IN THE  
"SAVANNAH RIVER" ON THE GEORGIA-SOUTH CAROLINA STATE LINE,  
THEN RUNNING NORTHEASTERLY THROUGH 'COTTON HILL ROAD' (U.S. HWY. 321)  
TO A POINT NEAR THE INTERSECTION OF SEVERAL UNNAMED SOIL ROADS,  
THEN TURNING EAST-NORTHEAST TO A POINT NEAR PLEASANT HILL ROAD (S-25-882/S-27-50),  
TURNING SLIGHTLY EAST-NORTHEAST TO A POINT NEAR BROWNING GATE ROAD/HERITAGE ROAD (S.C. HWY. 3),  
THEN CONTINUING NORTHEASTERLY TO A POINT AT 'OLD TRAM ROAD' (LOCAL/S-27-21), RESPECTIVELY,  
THEY RUNNING NORTHEASTERLY TO A POINT IN THE COOSAWHATCHIE RIVER WHERE THE COUNTY LINE  
LINE TURNS AND FOLLOWS THE COOSAWHATCHIE RIVER SOUTH-SOUTHEAST TO THE TULLIPNY RIVER.  
THE SOUTHERN CORNER OF THE STATE OF SOUTH CAROLINA

Date of Map:  
4/27/2023

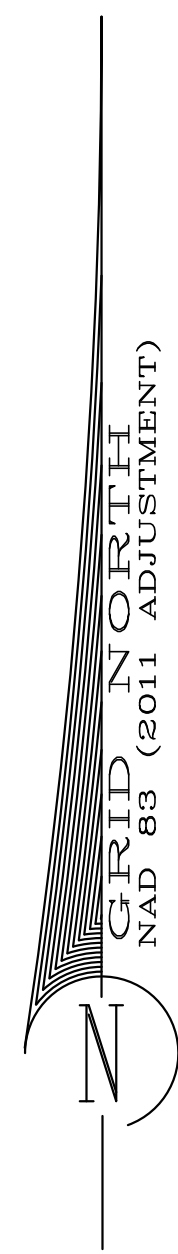
Drawn: AWK  
 Design: AWK  
 Checked: RDB  
 Approved: RDB

CAD File: 2020 HAMPTON-JASPER.dwg  
F.B. & Pg. N/A  
P.B. & Pg. N/A  
Pl.Board Appl.# N/A

Date	Revision No.

Proj. No.: 20020  
Sheet 6 Of 10

NOTE:  
FOR 'ADDITIONAL NOTES' SEE SHEET 1.



~ HAMPTON COUNTY ~

~ JASPER COUNTY ~

COUNTY LINE MONUMENT  
SET (#8 RBR W/ALUM. DISK)  
N: 307,950.50  
E: 1,965,675.07  
SCSPC NAD 83 (2011 Adj.)

COUNTY LINE MONUMENT  
SET (#8 RBR W/ALUM. DISK)  
N: 304,484.98  
E: 1,961,594.57  
SCSPC NAD 83 (2011 Adj.)

N49° 39' 33"E  
7186.43'

N49° 39' 33"E  
5,353.52'

HOUSE COURT (S-25-345)

CYPRESS CREEK ROAD  
(S-25-345)

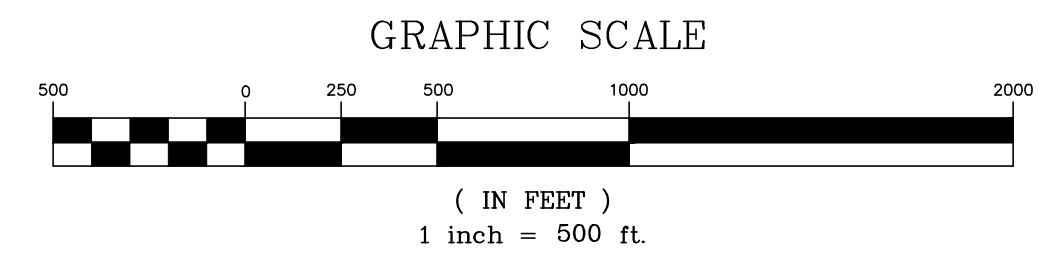
RIVERS HILL ROAD (S-27-213)

MATCH LINE - See Sheet 8

MATCH LINE - See Sheet 6

I HEREBY STATE THAT TO THE BEST OF MY PROFESSIONAL KNOWLEDGE, INFORMATION, AND BELIEF, THE SURVEY SHOWN HEREON WAS MADE IN ACCORDANCE WITH THE REQUIREMENTS OF THE 'STANDARDS OF PRACTICE MANUAL FOR SURVEYING IN SOUTH CAROLINA' (EFFECTIVE JUNE 26, 2009), AS PER ARTICLE 4, REGULATION 49-420 F., THAT THIS MAP OR PLAT IS INTENDED ONLY TO SHOW INFORMATION SURVEYED FOR A SPECIFIC STATED PURPOSE; THAT SURVEY LINES SHOWN HEREON ARE BASED ON ACTUAL FIELD SURVEY EVIDENCE AND/OR MEASUREMENTS WHICH MEET OR EXCEED THE REQUIREMENTS FOR A CLASS 'A' SURVEY AS SPECIFIED THEREIN.

	NOT VALID UNLESS SIGNED IN RED INK
	ISSUED AND SEALED BY S. No. 11053 ON 3/18/2024 CONSIDERED A CERTIFIED
	EMBOSSSED SEAL



This is not a valid, true copy of this document unless bearing an embossed seal of the surveyor or engineer.  
© Copyright 2024, CORNERSTONE SURVEYING & ENGINEERING, INC. All rights reserved. Reproduction or use of this document, in whole or in part, without permission is prohibited.  
Print No. / / /  
Date: / /

**CORNERSTONE**  
SURVEYING & ENGINEERING, INC.  
1240 Boccons Bridge Rd. • Summerville • South Carolina • 29485 • Phone: 843-871-9706

A PLAT OF A PORTION OF THE  
**HAMPTON-JASPER COUNTY LINE**  
STARTING AT A POINT IN THE  
'SAVANNAH RIVER' ON THE GEORGIA-SOUTH CAROLINA STATE LINE,  
TO A POINT NEAR THE INTERSECTION OF SEVERAL UNNAMED SOIL ROADS,  
TURNING SLIGHTLY EAST-NORTHEAST TO A POINT NEAR 'PLEASANT HILL ROAD' (S-25-882/S-27-50),  
THEN NORTH-EASTERLY TO A POINT AT 'OLD FARM ROAD' (LOCAL/S-25-211, RESPECTIVELY),  
THEN RUNNING NORTH-EASTERLY TO A POINT IN THE 'COGSWATCHE RIVER' WHERE THE COUNTY LINE  
TURNS AND FOLLOWS THE 'COGSWATCHE RIVER' SOUTH-SOUTHEAST TO THE 'TULPINN RIVER'.  
THE SOUTHERN CORNER OF THE STATE OF SOUTH CAROLINA

Date of Map:  
4/27/2023

Drawn: AWK  
 Design: AWK  
 Checked: RDB  
 Approved: RDB

CAD File: 2020 HAMPTON-JASPER.dwg  
F.B. & Pg. N/A  
P.B. & Pg. N/A  
Pl. Board Appl. # N/A

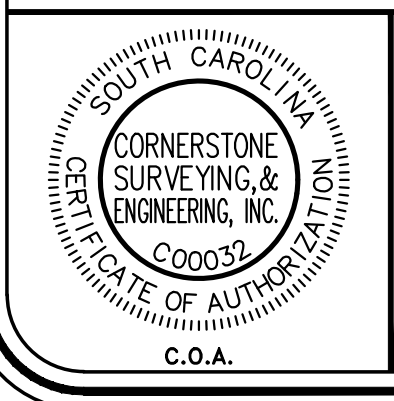
Date	Revision No.

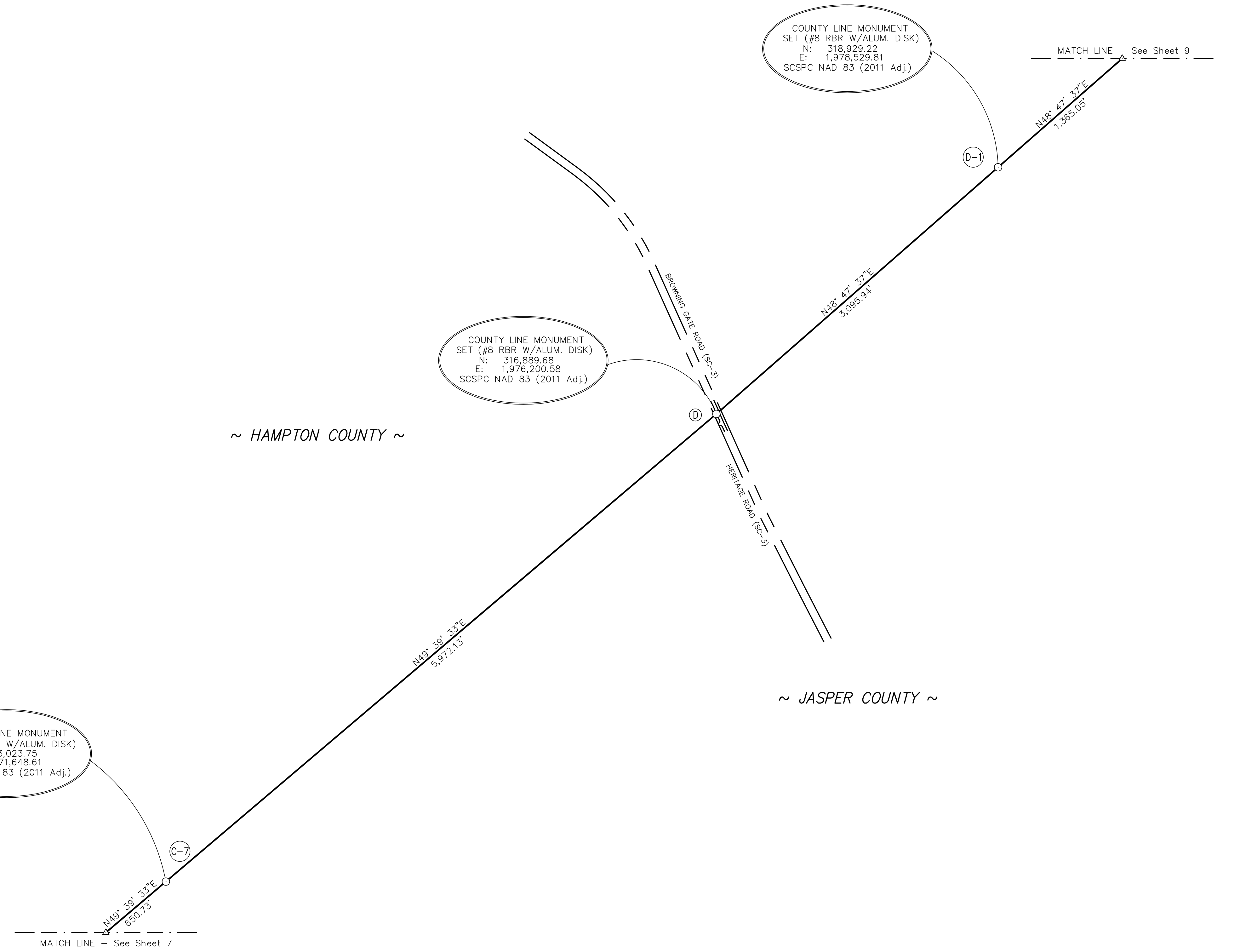
Proj. No.: 20020  
Sheet 7 Of 10

GRID IN ORTH  
NAD 83 (2011 ADJUSTMENT)

NOTE:  
FOR 'ADDITIONAL NOTES' SEE SHEET 1.

I HEREBY STATE THAT TO THE BEST OF MY PROFESSIONAL KNOWLEDGE, INFORMATION, AND BELIEF, THE SURVEY SHOWN HEREON WAS MADE IN ACCORDANCE WITH THE REQUIREMENTS OF THE 'STANDARDS OF PRACTICE MANUAL FOR SURVEYING IN SOUTH CAROLINA' (EFFECTIVE JUNE 26, 2009), AS PER ARTICLE 4, REGULATION 49-420 F., THAT THIS MAP OR PLAT IS INTENDED ONLY TO SHOW INFORMATION SURVEYED FOR A SPECIFIC STATED PURPOSE; THAT SURVEY LINES SHOWN HEREON ARE BASED ON ACTUAL FIELD SURVEY EVIDENCE AND/OR MEASUREMENTS WHICH MEET OR EXCEED THE REQUIREMENTS FOR A CLASS 'A' SURVEY AS SPECIFIED THEREIN.

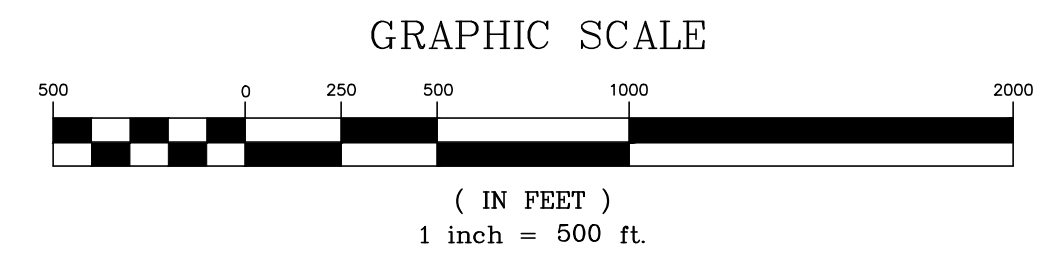
	<p>NOT VALID UNLESS SIGNED IN RED INK</p>	<p>ISSUED AND SEALED BY DAVID BRANTON, P.E. &amp; P.L.S. No. 11053 ON 3/18/2024</p>
<p>C.O.A.</p>	<p>STAMP</p>	<p>EMBOSSSED SEAL</p>



COUNTY LINE MONUMENT  
SET (#8 RBR W/ALUM. DISK)  
N: 313,023.75  
E: 1,971,648.81  
SCSPC NAD 83 (2011 Adj.)

COUNTY LINE MONUMENT  
SET (#8 RBR W/ALUM. DISK)  
N: 316,869.68  
E: 1,976,200.58  
SCSPC NAD 83 (2011 Adj.)

COUNTY LINE MONUMENT  
SET (#8 RBR W/ALUM. DISK)  
N: 318,929.22  
E: 1,978,529.81  
SCSPC NAD 83 (2011 Adj.)



This is not a valid, true copy of this document unless bearing an embossed seal of the surveyor or engineer.  
Copyright 2024, CORNERSTONE SURVEYING & ENGINEERING, INC. All rights reserved. Reproduction or use of this document, in whole or in part, without permission is prohibited.  
Print No. \_\_\_\_\_  
Date: \_\_\_\_/\_\_\_\_/\_\_\_\_

**CORNERSTONE**  
SURVEYING & ENGINEERING, INC.  
1240 Boccons Bridge Rd. • Summerville • South Carolina • 29485 • Phone: 843-871-9706

A PLAT OF A PORTION OF THE  
**HAMPTON - JASPER COUNTY LINE**  
STARTING AT A POINT IN THE  
'SAVANNAH RIVER' ON THE GEORGIA-SOUTH CAROLINA STATE LINE,  
THEN RUNNING NORTHEASTERLY THROUGH 'COTTON HILL ROAD' (U.S. HWY. 321)  
TO A POINT NEAR THE INTERSECTION OF SEVERAL UNNAMED SOIL ROADS,  
TURNING SLIGHTLY EAST-NORTHEAST TO A POINT NEAR PLEASANT HILL ROAD (S-25-682/S-27-50),  
THEN NORTHEASTERLY TO A POINT NEAR BROWNING GATE ROAD/HERITAGE ROAD (S.C. HWY. 3),  
CONTINUING NORTHEASTERLY TO A POINT AT 'OLD TRAM ROAD' (LOCAL/S-27-21), RESPECTIVELY,  
THEN RUNNING NORTHEASTERLY TO A POINT IN THE COSSAWHATCHE RIVER WHERE THE COUNTY LINE  
TURNS AND FOLLOWS THE COSSAWHATCHE RIVER SOUTH-SOUTHEAST TO THE TULLFINNY RIVER,  
THE SOUTHERN CORNER OF THE STATE OF SOUTH CAROLINA

Date of Map:  
4/27/2023

Drawn: AWK  
 Design: AWK  
 Checked: RDB  
 Approved: RDB

CAD File: 2020 HAMPTON-JASPER.dwg  
F.B. & Pg. N/A  
P.B. & Pg. N/A  
Pl. Board Appl. # N/A

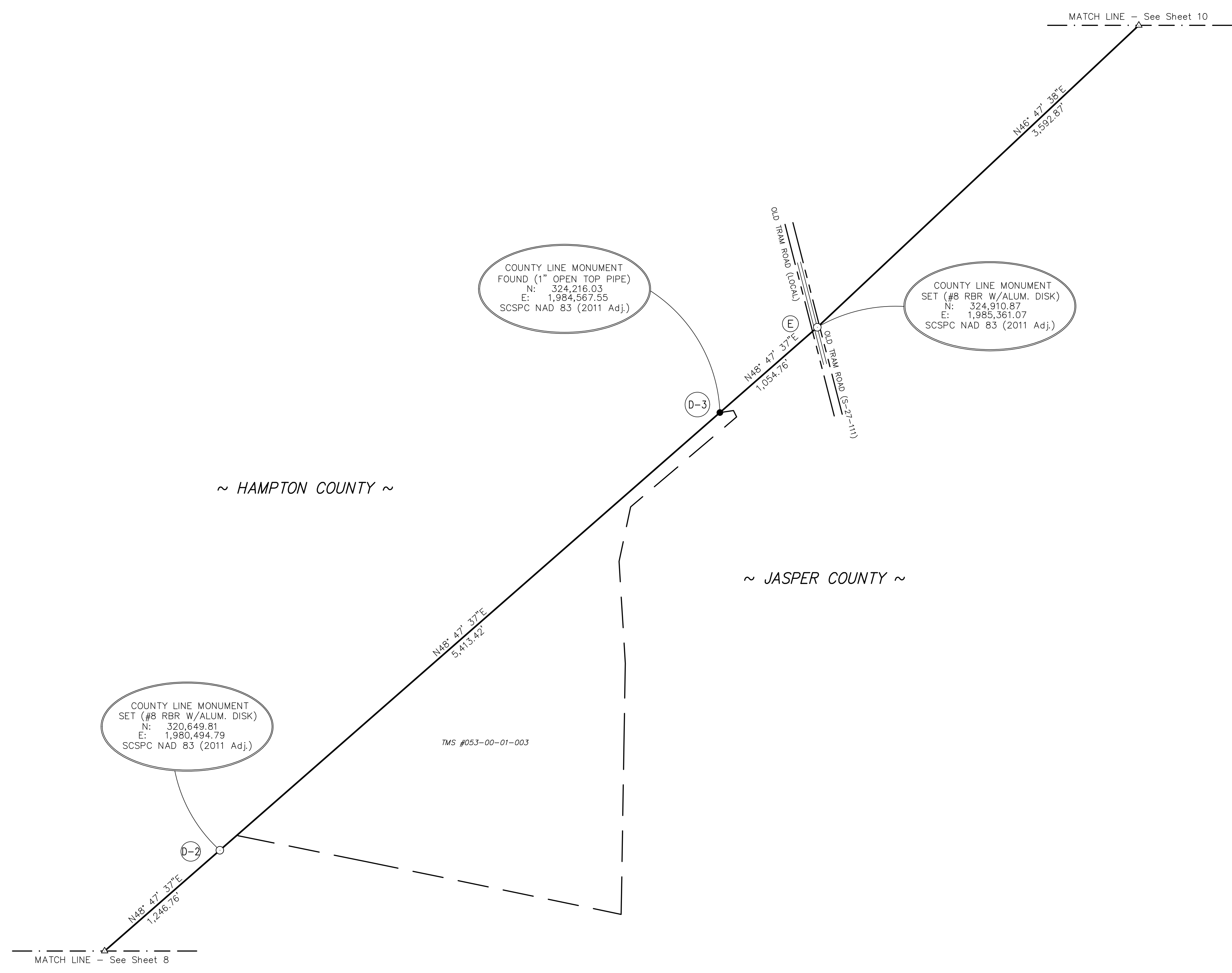
Date	Revision No.

Proj. No.: 20020  
Sheet 8 Of 10



GRID IN ORTH  
NAD 83 (2011 ADJUSTMENT)

NOTE:  
FOR 'ADDITIONAL NOTES' SEE SHEET 1.

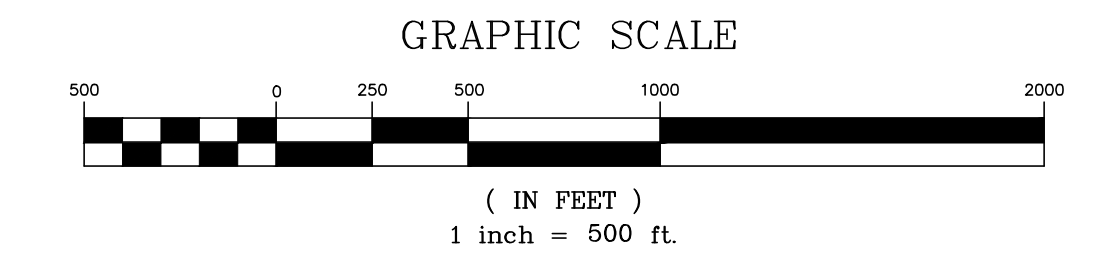


I HEREBY STATE THAT TO THE BEST OF MY PROFESSIONAL KNOWLEDGE, INFORMATION, AND BELIEF, THE SURVEY SHOWN HEREON WAS MADE IN ACCORDANCE WITH THE REQUIREMENTS OF THE 'STANDARDS OF PRACTICE MANUAL FOR SURVEYING IN SOUTH CAROLINA' (EFFECTIVE JUNE 26, 2009), AS PER ARTICLE 4, REGULATION 49-420 F., THAT THIS MAP OR PLAT IS INTENDED ONLY TO SHOW INFORMATION SURVEYED FOR A SPECIFIC STATED PURPOSE; THAT SURVEY LINES SHOWN HEREON ARE BASED ON ACTUAL FIELD SURVEY EVIDENCE AND/OR MEASUREMENTS WHICH MEET OR EXCEED THE REQUIREMENTS FOR A CLASS 'A' SURVEY AS SPECIFIED THEREIN.

NOT VALID UNLESS SIGNED IN RED INK

THIS DOCUMENT ORIGINALLY ISSUED AND SEALED BY DAVID BRANTON, P.L.S. No. 11053 ON 3/18/2024. THIS MEDIA SHOULD NOT BE CONSIDERED A CERTIFIED COPY.

DAVID BRANTON  
C.O.A. STAMP EMBOSSED SEAL



This is not a valid, true copy of this document unless bearing on the embossed seal of the surveyor or engineer.  
Copyright 2024, CORNERSTONE SURVEYING & ENGINEERING, INC. All rights reserved. Reproduction or use of this document, in whole or in part, without permission is prohibited.  
Print No. / / /  
Date / /

**CORNERSTONE SURVEYING & ENGINEERING, INC.**  
1240 Boccons Bridge Rd. • Summerville • South Carolina • 29485 • Phone: 843-871-9706

A PLAT OF A PORTION OF THE HAMPTON-JASPER COUNTY LINE STARTING AT A POINT IN THE 'SAVANNAH RIVER' ON THE GEORGIA-SOUTH CAROLINA STATE LINE, THEN RUNNING NORTHEASTERLY THROUGH 'COTTON HILL ROAD' (U.S. HWY. 321) TO A POINT NEAR THE INTERSECTION OF SEVERAL UNNAMED SOIL ROADS, TURNING SLIGHTLY EAST-NORTHEAST TO A POINT NEAR 'PLEASANT HILL ROAD' (S-25-832/S-27-50), THEN NORTHEASTERLY TO A POINT NEAR 'BROWNING GATE ROAD' (LOCAL/S-27-271), RESPECTIVELY, THEN RUNNING NORTHEASTERLY TO A POINT AT 'OLD TRAM ROAD' (LOCAL/S-27-271), THEN RUNNING NORTHEASTERLY TO A POINT IN THE 'COOSA/HAICHE RIVER' WHERE THE COUNTY LINE TURNS AND FOLLOWS THE 'COOSA/HAICHE RIVER' SOUTH-SOUTHEAST TO THE 'TULLFINNY RIVER', THE SOUTHERN CORNER OF THE STATE OF SOUTH CAROLINA.

Date of Map: 4/27/2023

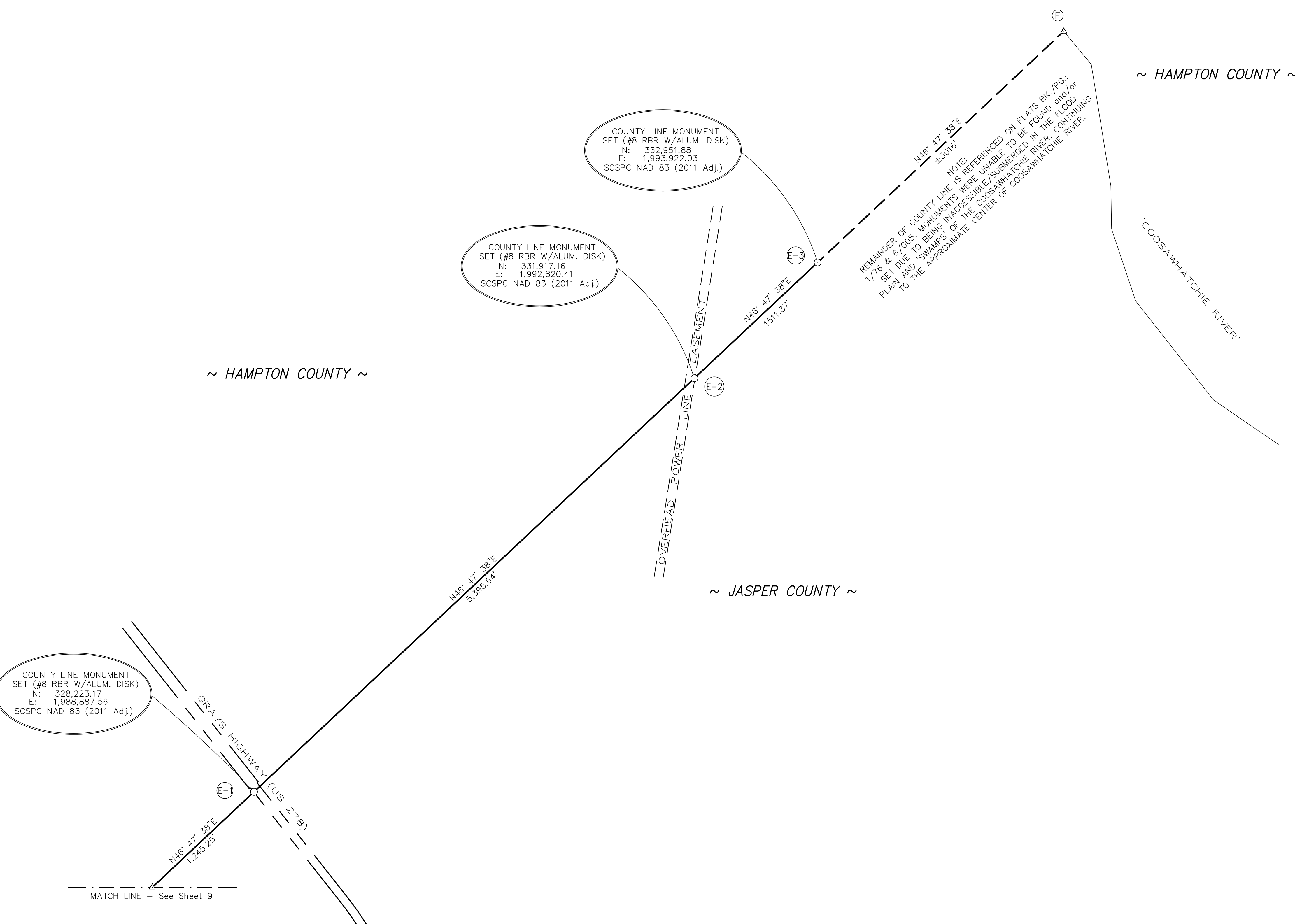
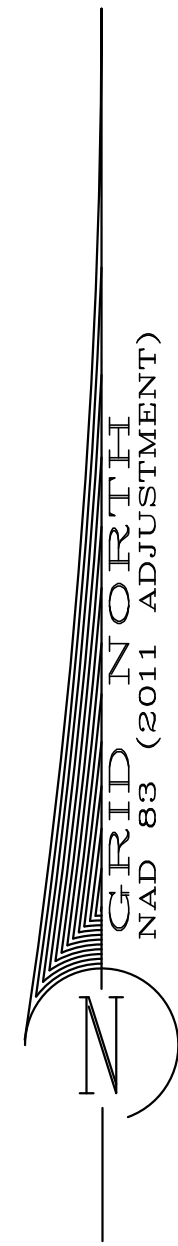
Drawn: AWK  
Design: AWK  
Checked: RDB  
Approved: RDB

CAD File: 2020 HAMPTON-JASPER.dwg  
F.B. & Pg. N/A  
P.B. & Pg. N/A  
Pl. Board Appl. # N/A

Date	Revision No.

Proj. No.: 20020  
Sheet 9 Of 10

NOTE:  
FOR 'ADDITIONAL NOTES' SEE SHEET 1.



I HEREBY STATE THAT TO THE BEST OF MY PROFESSIONAL KNOWLEDGE, INFORMATION, AND BELIEF, THE SURVEY SHOWN HEREON WAS MADE IN ACCORDANCE WITH THE REQUIREMENTS OF THE 'STANDARDS OF PRACTICE MANUAL FOR SURVEYING IN SOUTH CAROLINA' (EFFECTIVE JUNE 26, 2009), AS PER ARTICLE 4, REGULATION 49-420 F., THAT THIS MAP OR PLAT IS INTENDED ONLY TO SHOW INFORMATION SURVEYED FOR A SPECIFIC STATED PURPOSE; THAT SURVEY LINES SHOWN HEREON ARE BASED ON ACTUAL FIELD SURVEY EVIDENCE AND/OR MEASUREMENTS WHICH MEET OR EXCEED THE REQUIREMENTS FOR A CLASS 'A' SURVEY AS SPECIFIED THEREIN.

NOT VALID UNLESS SIGNED IN RED INK

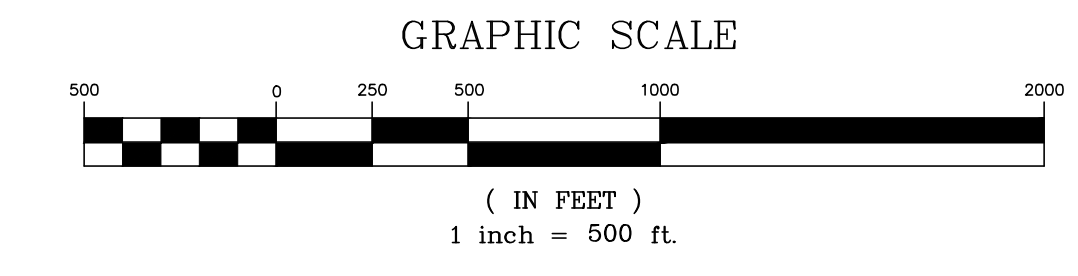
CORNERSTONE SURVEYING & ENGINEERING, INC. C.O.A. 000037

PROFESSIONAL ENGINEER IN THE STATE OF SOUTH CAROLINA P.L.S. No. 11053 ON 3/18/2024

DAVID BRANSHAW

STAMP

EMBOSSED SEAL



This is not a valid, true copy of this document unless bearing an embossed seal of the surveyor or engineer.

Copyright 2024, CORNERSTONE SURVEYING & ENGINEERING, INC. All rights reserved. Reproduction or use of this document, in whole or in part, without permission is prohibited.

Print No. \_\_\_\_\_ Date: \_\_\_/\_\_\_/\_\_\_

**CORNERSTONE SURVEYING & ENGINEERING, INC.**

1240 Bacon's Bridge Rd., Summerville, South Carolina 29485 Phone: 843-871-5706

A PLAT OF A PORTION OF THE HAMPTON-JASPER COUNTY LINE STARTING AT A POINT IN THE 'SAVANNAH RIVER' ON THE GEORGIA-SOUTH CAROLINA STATE LINE, THEN RUNNING NORTHEASTERLY THROUGH 'COTTON HILL ROAD' (U.S. HWY. 321) TO A POINT NEAR THE INTERSECTION OF SEVERAL UNNAMED SOIL ROADS, TURNING SLIGHTLY EAST-NORTHEAST TO A POINT NEAR PLEASANT HILL ROAD (S-25-682/S-27-50), THEN NORTHEASTERLY TO A POINT NEAR BROWNING GATE ROAD/HERITAGE ROAD (S.C. HWY. 5), CONTINUING NORTHEASTERLY TO A POINT AT 'OLD TRAM ROAD' (LOCAL/S-27-21), RESPECTIVELY, THEN RUNNING NORTHEASTERLY TO A POINT IN THE COOSAWATCHIE RIVER WHERE THE COUNTY LINE TURNS AND FOLLOWS THE COOSAWATCHIE RIVER SOUTH-SOUTHEAST TO THE TULLFERRY RIVER, THE SOUTHERN CORNER OF THE STATE OF SOUTH CAROLINA.

Date of Map: 4/27/2023

Drawn: AWK  
 Design: AWK  
 Checked: RDB  
 Approved: RDB

CAD File: 22020 HAMPTON-JASPER.dwg

F.B. & Pg. N/A  
P.B. & Pg. N/A  
Pl. Board Appl. # N/A

Date	Revision No.

Proj. No.: 20020  
Sheet 10 Of 10