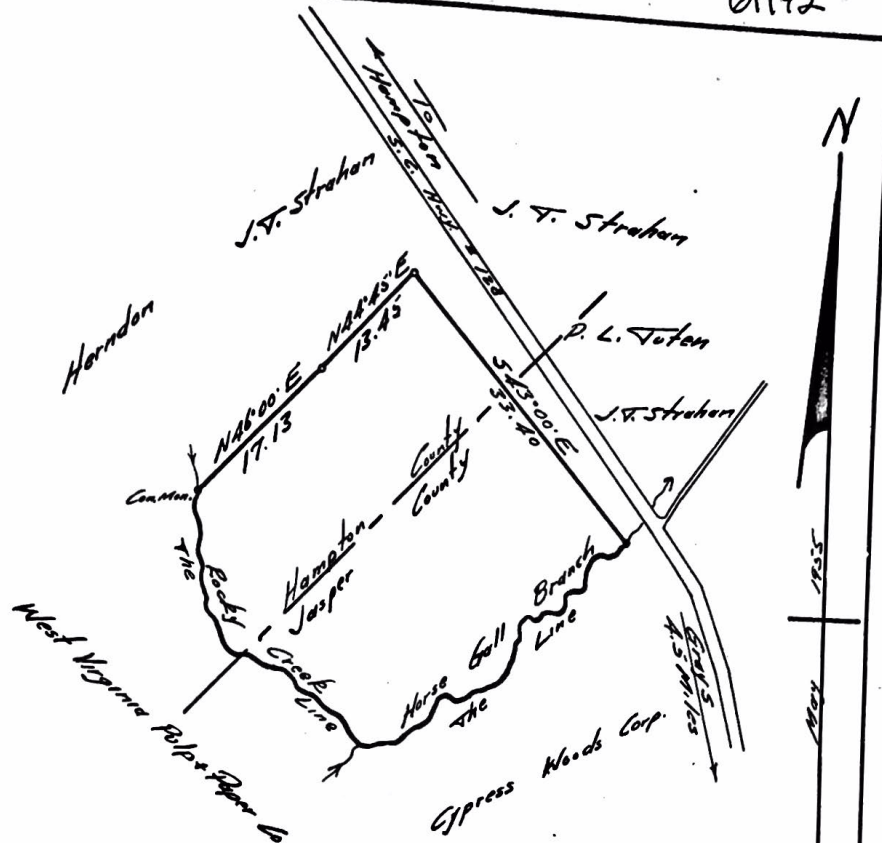


61192



GAIR WOODLANDS CORPORATIONS

J. Milton Ginn (Gooding Tract)

116.2 Acres

Varnville School District #27, Hampton County

School District #1, Jasper County

South Carolina

D39-470

Scale 1" = 10 Chains

*filed Jan 30th 1956
at 3:40 PM
at 2000
check of court*

Note: I hereby certify that the lands as shown were surveyed by me during Dec. 1955 and I completed this map on Jan. 3, 1956. There are 65.4 acres in Jasper Co. and 50.8 acres in Hampton Co.

H. M. Brown
Reg. Land Surveyor
South Carolina