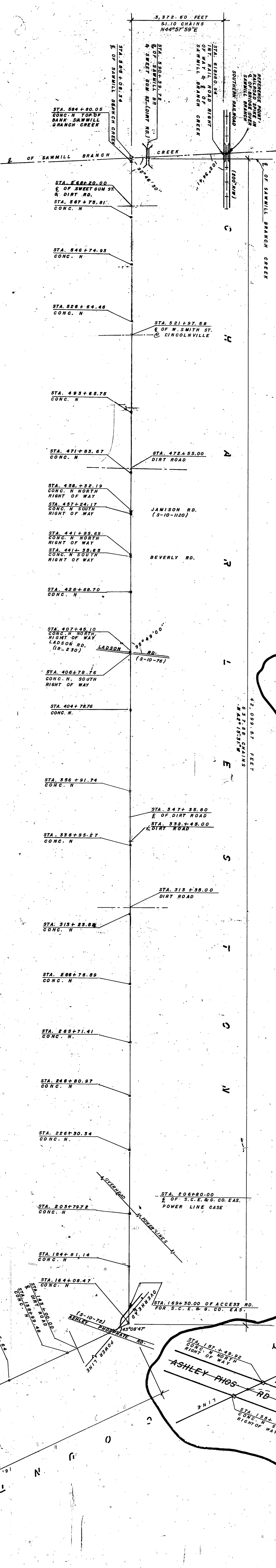
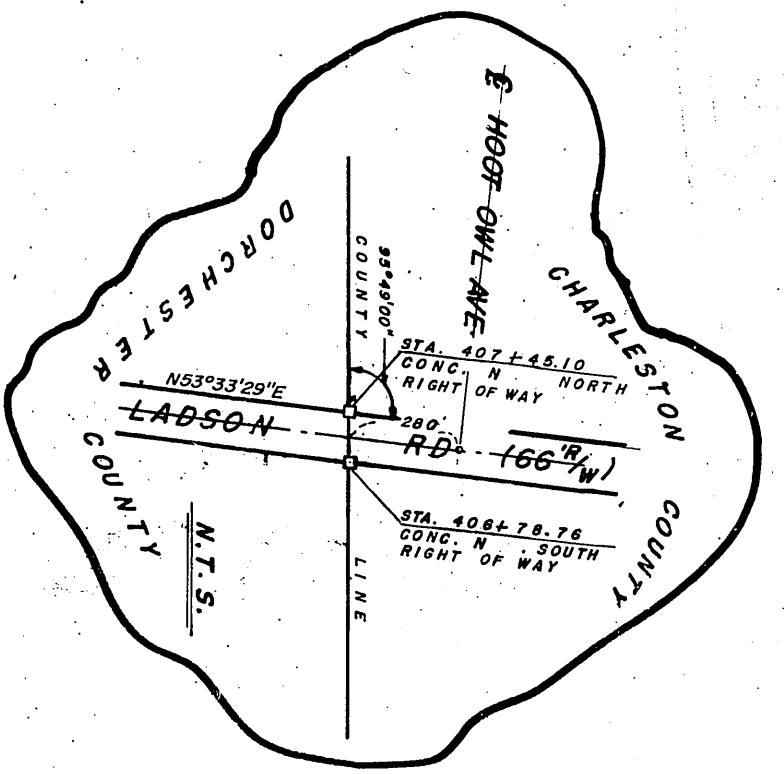


Charleston, South Carolina
Office of Register & Conveyance
This is recorded this 2 day of August 1982
copy filed in Plat Book 1982 and platting cloth
filed in File 1 Drawn by [Signature] and
checked by [Signature] Original filed in [Signature] delivered
to [Signature] by [Signature]

[Signature]
Register & Conveyance



NOTE: THIS BOUNDARY LINE IS NOT AS SHOWN ON S.C. CODE OF LAWS, BECAUSE OF DISCREPANCY IN ORIGINAL DISCUSSION REPRESENTS A COMPROMISE LINE APPROVED BY CHARLESTON, DORCHESTER COUNTIES.

SATISFACTORY TO CHARLESTON COUNTY

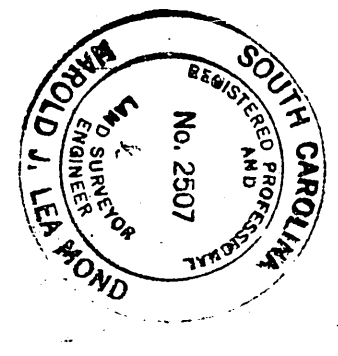
[Signature]

[Signature]

SATISFACTORY TO DORCHESTER COUNTY

[Signature]

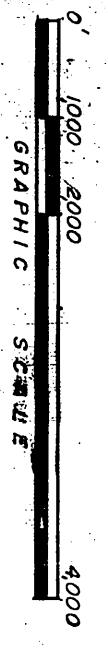
[Signature]



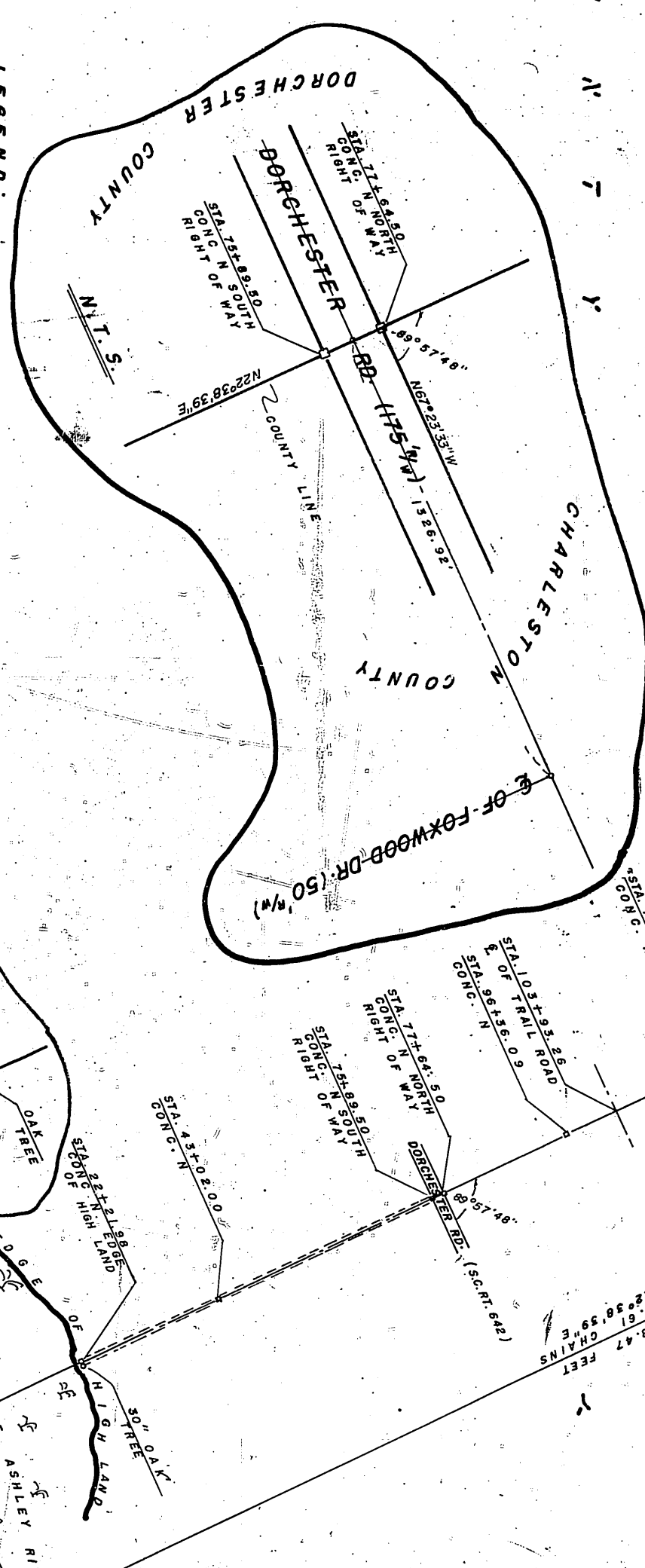
APPROVED PLAT
I.B. [Signature]
DIRECTOR OF PLANNING
CHARLESTON COUNTY PLANNING BOARD
9559
AUG. 3, 1982

ENGINEER/SURVEYORS CERTIFICATE:
I, HAROLD J. LEVINE, a duly Licensed Professional Engineer and a Licensed Professional Surveyor in the State of South Carolina, hereby certify that I have prepared the above plat and that it is a true and correct representation of the survey conducted by me on the 10th day of July, 1978, and that the same is in accordance with the provisions of the Surveying Act of 1964, as amended.

PLAT
OF THE
CHARLESTON - DORCHESTER COUNTIES
SOUTH CAROLINA
DATE: JULY 10, 1978
SCALE: 1" = 2000'



LEGEND:
□ CONCRETE MONUMENT
CONC. N
- TURN
N.T.S
- NOT TO SCALE



SIGMA ENGINEERS, INC.
CONSULTING ENGINEERS & LAND SURVEYORS
CHARLESTON, S.C.