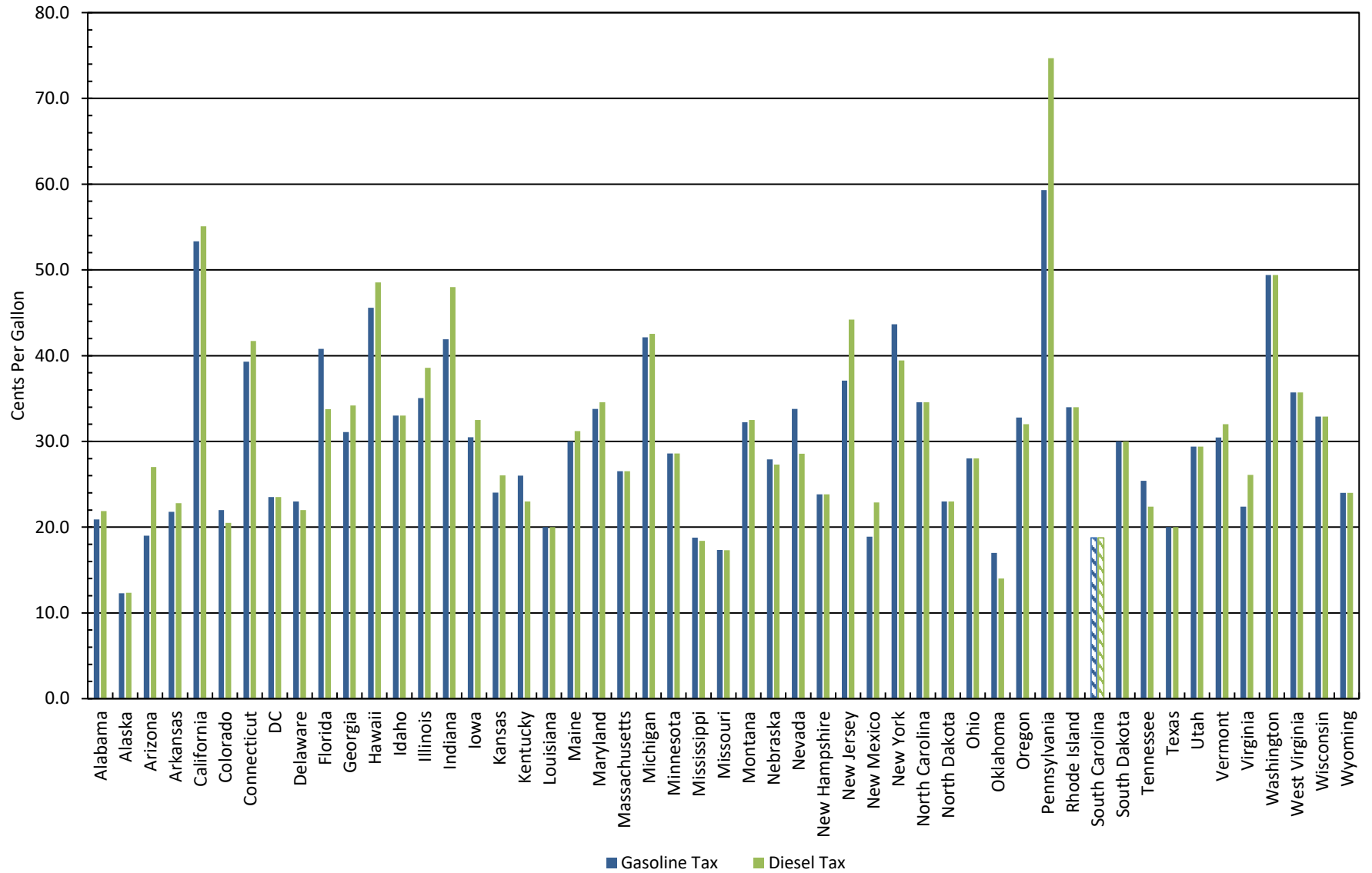
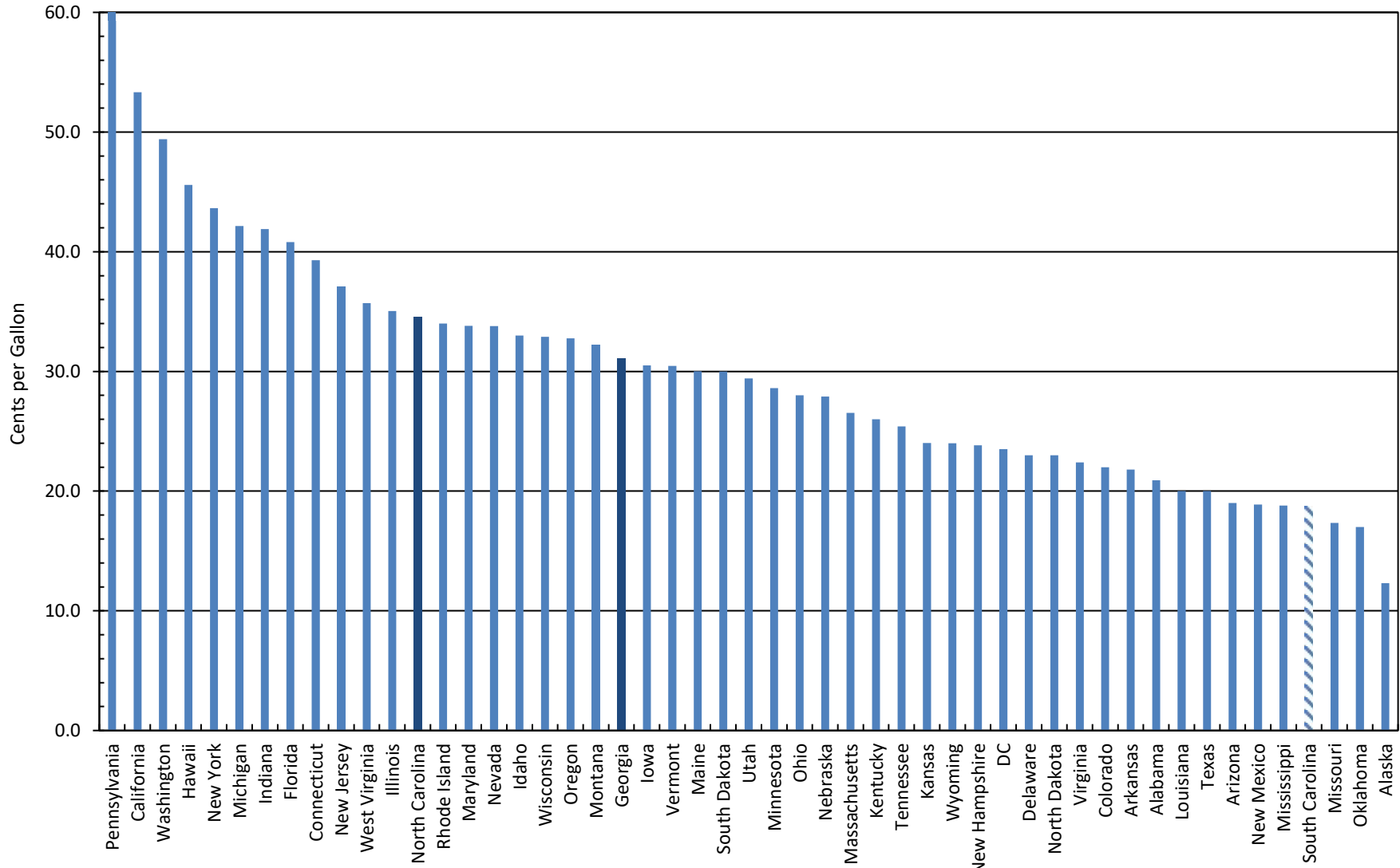


MOTOR FUEL TAX RATES BY STATE As of November 2017

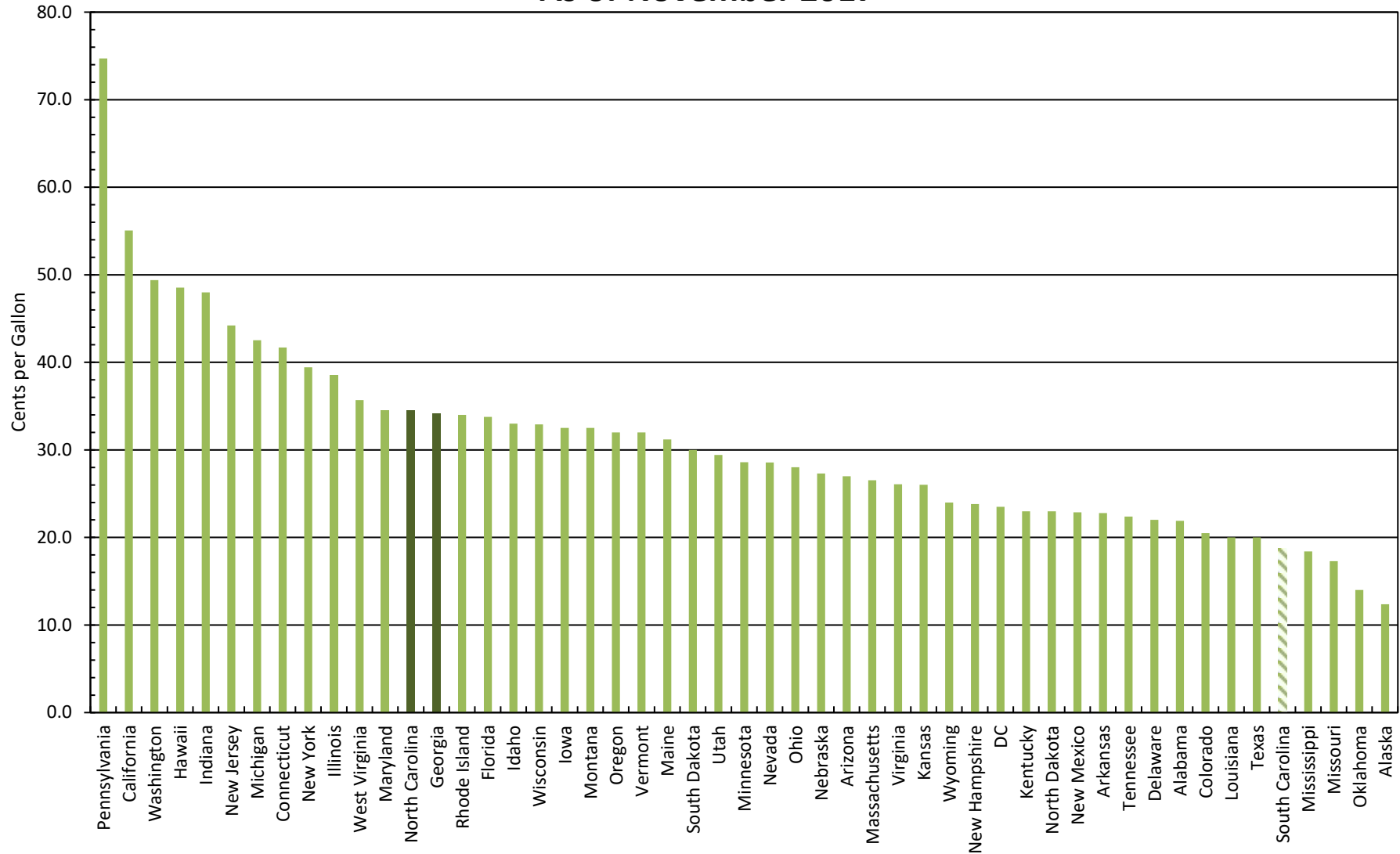


GASOLINE TAX RATES BY STATE As of November 2017



Note: Pursuant Act 40 of 2017, South Carolina's motor fuel user fee will increase \$0.02 annually for six years beginning July 1, 2017, for a total increase of \$0.12 by July 1, 2022. Data provided for other states is as of November 2017. Motor fuel tax figures include state excise taxes, other state excise taxes, and fees.

DIESEL TAX RATES BY STATE As of November 2017



Note: Pursuant to Act 40 of 2017, South Carolina's motor fuel user fee will increase \$0.02 annually for six years beginning July 1, 2017, for a total increase of \$0.12 by July 1, 2022. Data provided for other states is as of November 2017. Motor fuel tax figures include state excise taxes, other state excise taxes, and fees.